

Mid Air Collision Avoidance Program



Military aircraft usually travel in pairs



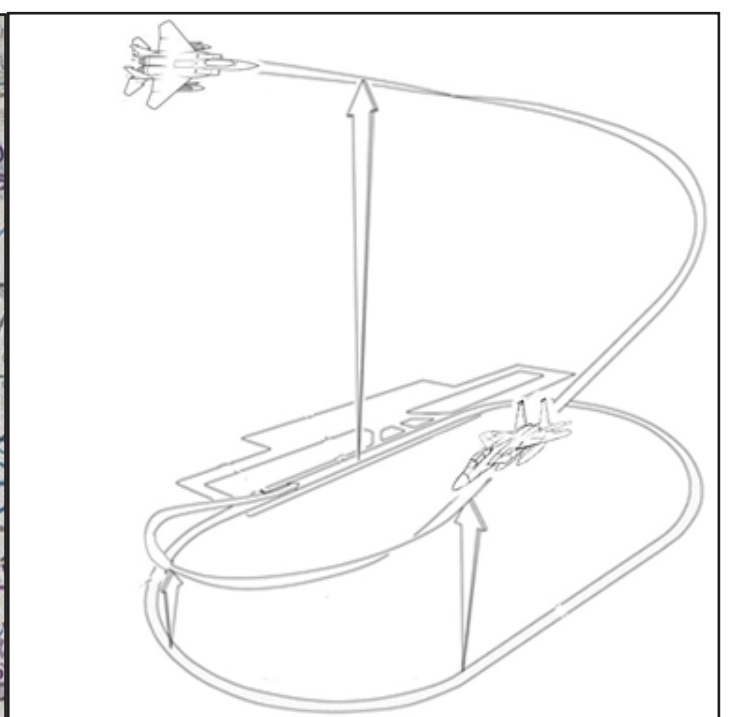
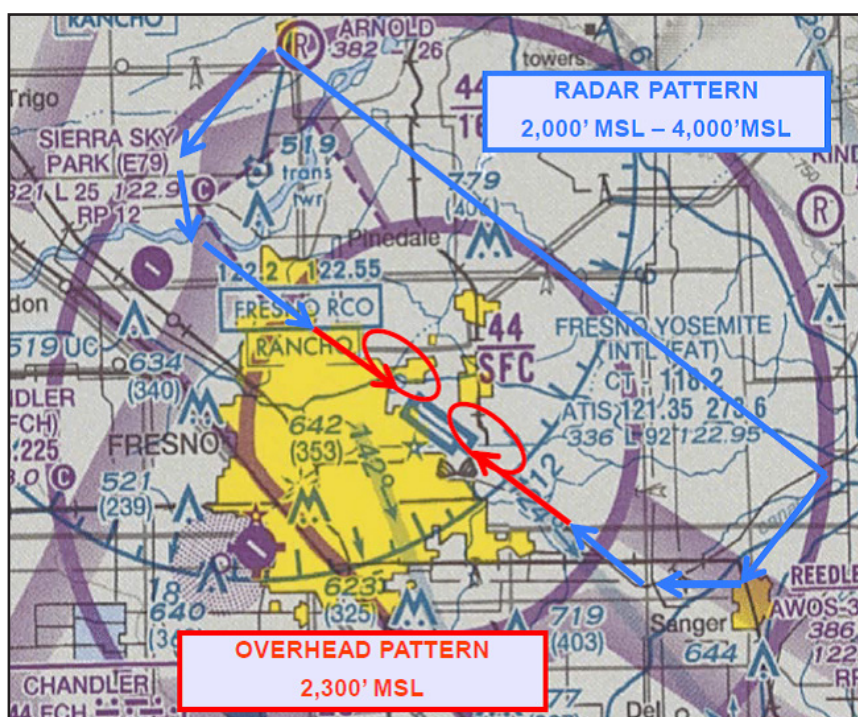
Visit the Fresno Air National Guard's website at <http://www.144fw.ang.af.mil> and click on "Flight Safety".

Also visit FAA's Mid-Air Collision Avoidance Website https://www.faasafety.gov/gslac/ALC/libview_normal.aspx?id=6851 for additional mid-air collision avoidance resources.

Fresno Fighter Traffic Pattern

The "overhead" pattern is the common VFR pattern fighters use. "Initial" is where the fighters approach the runway at 2300 MSL a couple miles from the approach end, then while over the runway, they "break" to the north and fly a 360 degree oval "race track" type pattern.

The "radar pattern" is what we call it when we're being vectored for multiple instrument approaches.



Normal Overhead 2300'
High (Tactical) Overhead 5000'

